

Sheet Number	Sheet Name	Revision
LD-DA001	MATERIAL FINISHES	B
LD-DA002	PLANTING PALETTE	A
LD-DA003	PLANTING SCHEDULE	B
LD-DA100	GROUND FLOOR LANDSCAPE GENERAL ARRANGEMENT	C
LD-DA110	LEVEL 2 LANDSCAPE GENERAL ARRANGEMENT	A
LD-DA200	NORTH ELEVATION	A
LD-DA210	EAST ELEVATION	B

2-8 Sarah Street

[Section 4.55 Landscape Drawings]

3rd July 2018
REFERENCE: 2018-LD-DA001



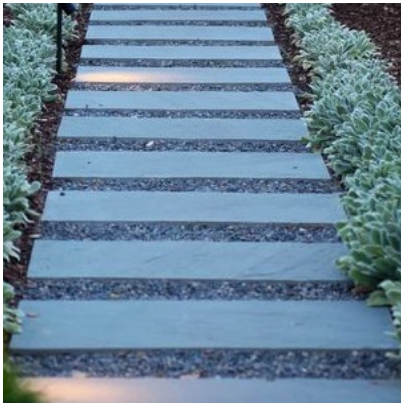
Rev	Description	Date
A	FOR SECTION 4.55	08-06-18
B	FOR SECTION 4.55	03-07-18

Material Finishes



P1 - INSITU CONCRETE PAVEMENT

FINISH: LIGHT EXPOSED AGGREGATE
PRODUCT: BUFF / GREY AGGREGATE MIX
APPLICATION: DRIVEWAY & DROP-OFF AREA.



P4 - CONCRETE STEPPING STONES

FINISH: LIGHT EXPOSED AGGREGATE
PRODUCT: BUFF / GREY AGGREGATE MIX
APPLICATION: SECONDARY PEDESTRIAN ACCESS.



SE - STEEL EDGE

MATERIAL: 2.0MM GAUGE X 100MM GALVANISED STEEL EDGING
PRODUCT: IDEAL EDGING OR SIMILAR APPROVED
APPLICATION: PLANTING AREAS



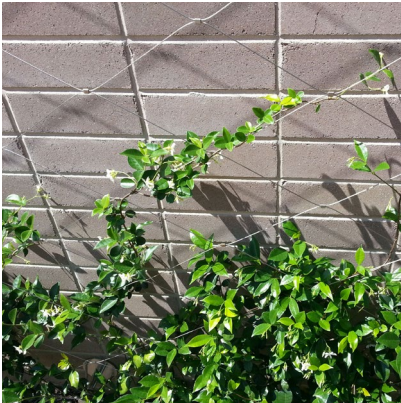
P2 - NATURAL STONE SETTS

SIZE: 100 X 100 X 40MM
PRODUCT: SESAME GREY GRANITE OR SIMILAR APPROVED
LAYING: STACKED BOND
FINISH: SANDBLASTED
APPLICATION: DRIVEWAY.



P5 - BROOM-FINISHED CONCRETE PAVEMENT

TO COUNCILS STANDARD.
APPLICATION: PUBLIC FOOTPATHS



GW - GREEN WALL

MATERIAL: STAINLESS STEEL WIRE ROPE.
PRODUCT: JAKOB INOX LINE SYSTEM OR SIMILAR APPROVED
APPLICATION: MAIN PEDESTRIAN ENTRANCE.



P3 - CONCRETE PAVERS

PRODUCT: ECOTHRIHEX PERMEABLE CONCRETE BLOCK PAVER OR SIMILAR APPROVED
APPLICATION: CAR PARKING BAYS & LOADING BAY.



CE -150MM UPSTAND CONCRETE EDGE

TO COUNCILS STANDARD.
APPLICATION: DRIVEWAY, DROP-OFF AREA & LOADING BAY

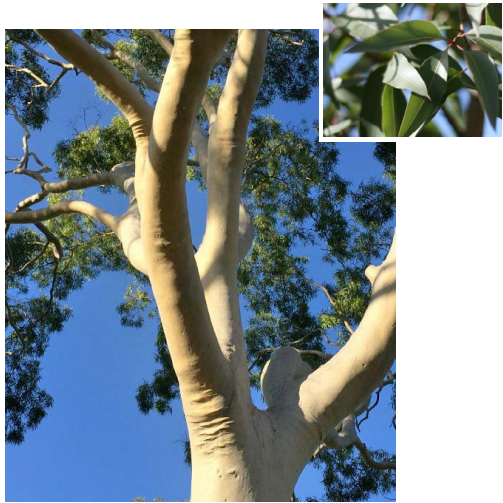


F1 -RECLAIMED TIMBER SLEEPERS

PRODUCT: CLASS 1 HARDWOOD RECYCLED TIMBER
SIZE: 220 X 120MM (LENGTH VARIES)
APPLICATION: PLANTING AREA ALONG ROBNEY & O'RIORDAN STREETS.

Planting Palette

Trees



Corymbia citriodora



Livistona australis



Waterhousea floribunda

Grasses / Groundcovers



Dichondra repens



Viola hederacea



Carpobrotus edulis



Chrysocephalum apiculatum 'Dester Flame'



Casuarina glauca (prostrate)



Myoporum parvifolium



Lomandra longifolia 'Tanika'



Acacia cognata 'Limelight'

Shrubs



Banksia spinulosa 'Birthday Candles'



Doryanthes excelsa



Austromyrtus dulcis



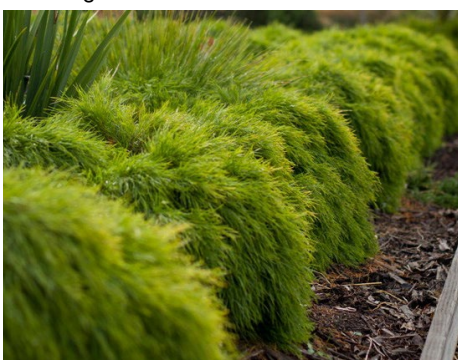
Acmena smithii var. minor



Agave angustifolia



Westringia fruticosa 'Zena'



Acacia cognata 'Limelight'



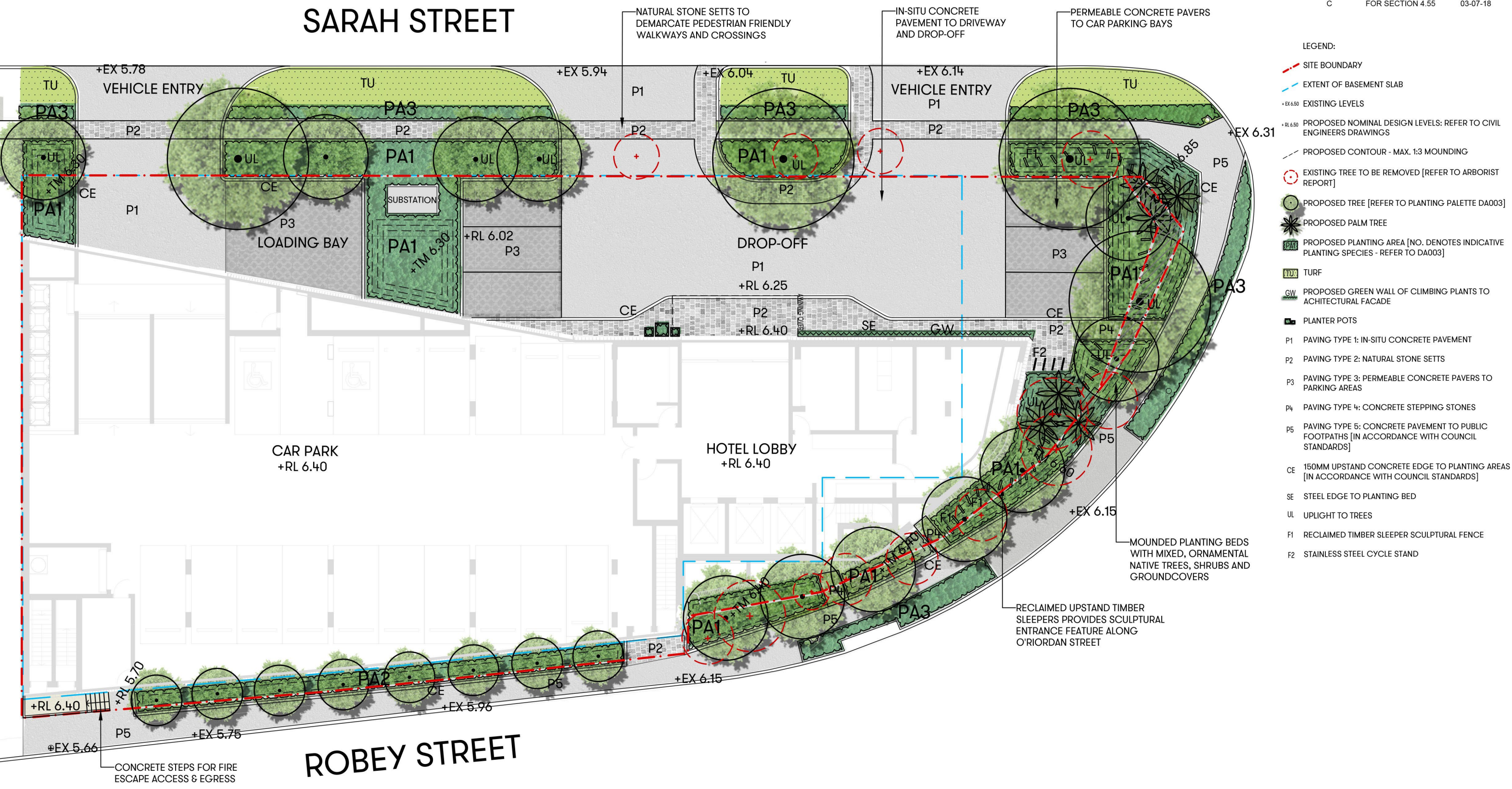
Raphiolepis indica 'Snow Maiden'

Planting Schedule


Botanic Name	Common Name	Native/ Exotic	Mature Height	Mature Spread
Trees & Palms				
<i>Angophora costata</i>	Smooth Barked Apple	Native	15-20m	5-15m
<i>Buckinghamia celisissima</i>	Ivory Curl	Native	8-10m	3-4m
<i>Corymbia citriodora</i>	Lemon Scented Gum	Native	20-25m	5-7m
<i>Corymbia maculata 'Ribbons of Hope'</i>	Spotted Gum	Native	20-25m	5-7m
<i>Livistona australis</i>	Cabbage Tree Palm	Native	20-30m	3-5m
<i>Melia azerdarach</i>	White Cedar	Native	10-15m	5-10m
<i>Waterhousea floribunda</i>	Weeping Lilly Pilly	Native	10-15m	5-10m
PA1 - Shrubs				
<i>Acacia cognata 'limelight'</i>	River Wattle	Native	.7m	1m
<i>Agave angustifolia</i>	Narrow-leaved Century Plant	Exotic	1m	1m
<i>Austromyrtus dulcis</i>	Midgenberry	Native	.75m	1m
<i>Banksia serrata</i>	Old Man Banksia	Native	2-3m	1.5m
<i>Banksia spinulosa</i>	Birthday Candles	Native	.8m	1.5m
<i>Baeckea camphorata</i>	Flax-leaf Heath Myrtle	Native	1.5m	2m
<i>Correa alba</i>	White Correa	Native	1.5m	1.5m
<i>Doryanthes excelsa</i>	Gyamea Lily	Native	3m	3m
<i>Eremophila glabra 'Silver Ball'</i>	Emu Bush	Native	.75m	.75m
<i>Phormium tenax 'Pink Ribbon'</i>	New Zealand Flax	Exotic	1.5m	1.5m
<i>Westringia fruticosa 'Zena'</i>	Coastal Rosemary	Native	1.5m	1.5m
PA1 - Grasses & Groundcovers				
<i>Carex appressa</i>	Tall Sedge	Native	1m	1m
<i>Casuarina glauca (prostrate)</i>	Shagpile	Native	.2m	.5m
<i>Carpobrotus edulis</i>	Pigface	Native	.2m	1m
<i>Dianella caerulea 'Gold Mine'</i>	Flax Lily	Native	1m	1m
<i>Dichondra repens</i>	Kidney Weed	Native	.1m	.5m
<i>Lomandra longifolia 'Tanika'</i>	Lomandra	Native	.5m	.5m
<i>Myoporum parvifolium</i>	Boobialla	Native	.2m	1-3m
<i>Viola hederacea</i>	Native Violet	Native	10-15cm	1m
PA2 - Shrubs				
<i>Austromyrtus dulcis</i>	Midgenberry	Native	.75m	1m
<i>Alpinia henryi 'Pink Perfection'</i>	Native Ginger	Native	2m	1m
<i>Acmena smithii var. Minor</i>	Dwarf Lilly Pilly	Native	1-5m	1-2m
<i>Baeckea camphorata</i>	Flax-leaf Heath Myrtle	Native	1.5m	2m
<i>Helmholtzia glaberrima</i>	Stream Lily	Native	1m	1.5m
<i>Syzygium australe 'Resilience'</i>	Lilly Pilly	Native	5-10m	2-3m


Botanic Name	Common Name	Native/ Exotic	Mature Height	Mature Spread
PA2 - Grasses & Groundcovers				
<i>Dichondra repens</i>	Kidney Weed	Native	.1m	.5m
<i>Juniperus horizontalis</i>	Creeping Juniper	Exotic	.3m	1m
<i>Liriope muscari 'Just Right'</i>	Turf Lily	Exotic	.6m	1m
<i>Ophiopogon nanus</i>	Dwarf Mondo	Exotic	.3m	.5m
<i>Viola hederacea</i>	Native Violet	Native	10-15cm	1m
PA3 - Shrubs				
<i>Raphiolepis indica 'Oriental Pearl'</i>	Oriental Pearl Indian Hawthorn	Exotic	.5-1m	1m
<i>Westringia 'Jervis Gem'</i>	Jervis Gem	Native	.25m	.5m
PA4 - Grasses & Groundcovers				
<i>Carex appressa</i>	Tall Sedge	Native	1m	1m
<i>Carpobrotus edulis</i>	Pigface	Native	.2m	1m
<i>Casuarina glauca (prostrate)</i>	Shagpile	Native	.2m	.5m
<i>Chrysocephalum apiculatum 'Desert Flame'</i>	Yellow Buttons Desert Flame	Native	.3m	.5m
<i>Dianella caerulea 'Gold Mine'</i>	Flax Lily	Native	1m	1m
<i>Lomandra longifolia 'Tanika'</i>	Lomandra	Native	.5m	.5m
<i>Myoporum parvifolium</i>	Boobialla	Native	.2m	1-3m
Green Wall				
<i>Trachelospermum jasminoides</i>	Star Jasmine	Exotic	.5m	.5m
All trees to be minimum supply size of 75-100Lt to comply with Council's DCP requirements.				





LEGEND:

-  SITE BOUNDARY
- + RL 6.50

PROPOSED NOMINAL DESIGN LEVELS: REFER TO CIVIL ENGINEERS DRAWINGS
- 

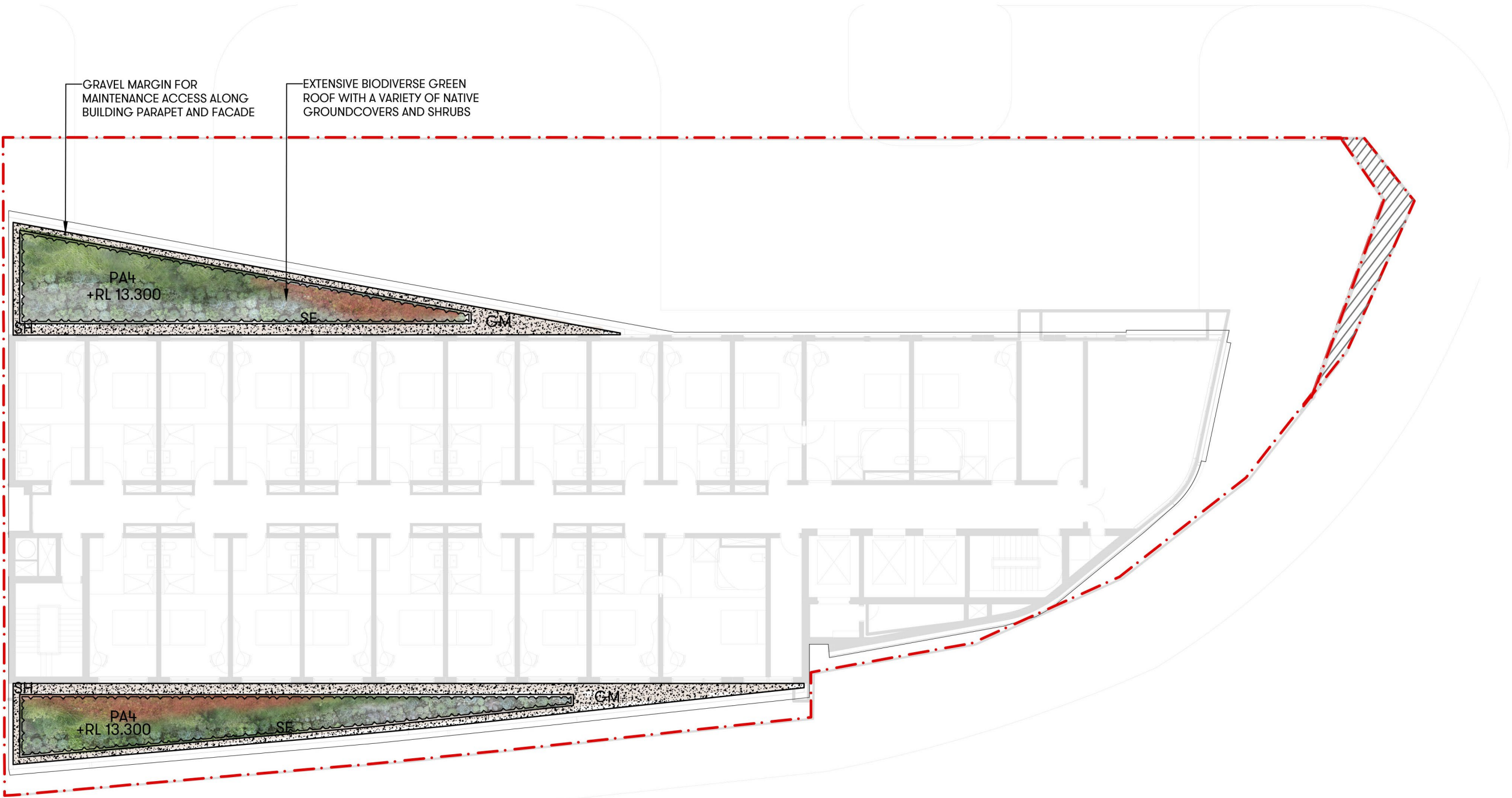
PROPOSED PLANTING AREA TO GREEN ROOF [NO. DENOTES INDICATIVE PLANTING SPECIES - REFER TO PLANTING SCHEDULE DA003]
- GM

GRAVEL MARGIN FOR MAINTENANCE ACCESS
- SE

STEEL EDGE TO PLANTED AREA
- SH

SAFETY HARNESS SYSTEM FOR MAINTENANCE SAFETY

SARAH STREET



ROBEY STREET



Scott Carver Pty Ltd
Level One, One Chifley Square
Sydney NSW 2000 Australia
Telephone +61 2 9957 3988
hello@scottcarver.com.au
www.scottcarver.com.au

2-8 SARAH STREET
Project
Client
PRO-INVEST



Scale 1:200 @ A3

LEVEL 2 LANDSCAPE GENERAL ARRANGEMENT

Reference No.	Discipline	Drawing No.	Rev.
20180061	LD	DA110	A



Status	SECTION 4.55	
Nom. Architect	Simon Hall [RLA 11443]	
Print Date	July 2018	
Rev	Description	Date
A	FOR SECTION 4.55	08-06-18
B	FOR SECTION 4.55	03-07-18

